



## Herning welcomes you!

With a local population of 84,000 citizens and a surrounding area population of 2.6 million, the municipality of Herning is known as a textile town, and for its trade fairs, conferences, culture and schools.

Herning has more than 25,000 active athletes being members of more than 100 sports clubs. The municipality gives high priority to sports facilities for elite athletes as well as the athletes within sports for all. The area is most famous for its handball, soccer, ice hockey and cycling. All sport events enjoy large local support and great enthusiasm.

Herning is a fantastic event city. It is a central part of the city Council of Herning's strategy to host major sport events on an international level. The city of Herning has, already, considerable experience in organising large events, such as the 2009 World Wrestling Championships and the Women's EHF EURO 2010 Final.

In Herning you can take a walk down one of Denmark's longest pedestrian streets with shops on both sides and down the side street. End your shopping trip with a nice salad at one of the good and cosy cafés and restaurants or see a movie in Biocity and have some hot popcorn.



## MCH Multiarena

With a capacity of 14,000 spectators, the MCH Multiarena is the biggest multi-flexible venue of its kind in Denmark. With its impressive 28,000 square metres the arena is designed to host a huge variety of events such as sports, concerts, shows and entertainment.

With world class service and VIP-facilities MCH Multiarena is able to host national and international events of the biggest scale.

The Women's EHF EURO 2010 final matches were the first event to be hosted in this arena and therefore the first stepping stone on the way to fulfilling the future plans in store for the MCH Multiarena.

The vision of further expansion of the MCH by 2025 would imply a multi-flexible covered hall, stadium, business park, drive-in cinema, adventure land and cable car.

**Website:** [www.mch.dk](http://www.mch.dk)

**Nearest Airport:** Karup (national), Billund (international)

**Distance to city-centre:** 5 minutes

**Spectator Capacity:** 14,000



**TRAVELsense**  
SPORTS TRAVEL  
*Vi elsker oplevelser*

**Hotel:**

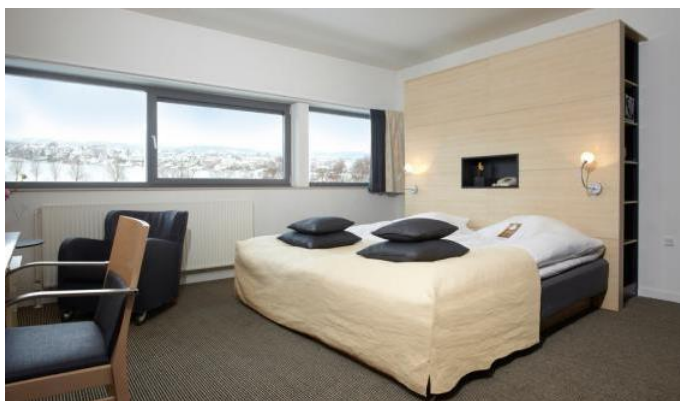
**Distance: Billund Airport - Hotel = 69 km / Hotel - MCH Multiarena = 46 km / Hotel – Silkeborg City Center = 0 km**

**Radisson Blu Silkeborg \*\*\*\***

With architecture evoking its beginnings as a paper mill, the four-star Radisson Blu Hotel Papirfabrikken, Silkeborg enjoys a wooded setting on the water that provides lovely views for hotel guests. Located in the area where this Danish harbour city was founded, the 100-room Silkeborg hotel is surrounded by forests and lakes, offering visitors the calming harmony of countryside and water. Guest rooms are tastefully appointed and feature Free high-speed, wireless Internet access and 24-hour room service. Silkeborg travellers can also experience one of the city's finest dining experiences at the hotel's Michael D. A waterfront venue for special events and meeting facilities for up to 800 guests make this hotel in Silkeborg an ideal destination.

Silkeborg is located 40 km east of Herning and 45 km west of Aarhus.

The Radisson Blu Hotel Papirfabrikken boasts rooms and suites with the comfort of uncluttered design and warm, neutral colours. Welcome amenities include air conditioning and Free high-speed, wireless Internet access, but guests will cherish views of the lush forests and lakes surrounding this Silkeborg accommodation.



**Prices are per person - per night:**

**Hotel Radisson Blu Silkeborg \*\*\*\***

In shared double room:

DKK 1025

In single room:

DKK 1775

**Price includes:**

1 night at Radisson Blu Silkeborg

Breakfast at the hotel

VAT (25%)

**Period of stay between:**

23. – 27. January 2014

